

# ***KINOPROL***<sup>®</sup>

ACTIVE INGREDIENT

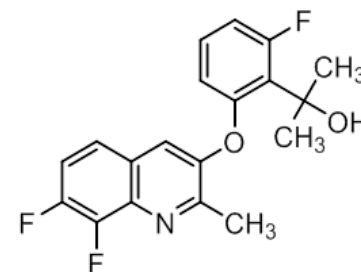
## Fungicide

IR-4 Technology Session  
Kristen Knox, Nisso America  
July 20, 2021



# **KINOPROL®**

ACTIVE INGREDIENT



## ➤ Mode of Action

- FRAC Code not yet determined
  - No cross-resistance with other chemical classes
    - Demethylation inhibitors (DMI)
    - Succinate dehydrogenase inhibitors (SDHI)
    - Quinone outside inhibitors (QoI)
    - Anilinopyrimidines (AP fungicides)
- Systemic, translaminar activity
- Broad-spectrum control against:
 

*Alternaria, Botryosphaeria, Botrytis, Sclerotinia, Cladosporium, Colletotrichum, Fusicladium, Fusarium, Monilinia, Podosphaera, Venturia, Pyricularia, Phomopsis, and Wilsonomyces* spp.

## ➤ Favorable toxicity, ecotox and e-fate profiles

## ➤ Label Signal Word - Caution



# **KINOPROL<sup>®</sup>**

ACTIVE INGREDIENT

## Pending Registrations

- U.S. EPA
  - Granted **Reduced Risk** status for all four criteria!
  - Proposed registration announced on June 25, 2021
  - PRIA decision date: July 30, 2021
  - Concurrent Review with CDPR
- Canada PMRA
  - Registration anticipated December 2021
- Nisso to register the active ingredient Ipflufenquin as **KINOPROL<sup>®</sup>**  
 Technical Fungicide  
 and one end use product:
  - **KINOPROL<sup>®</sup>** 20 SC Fungicide
    - 200 g a.i./L liquid suspension concentrate
    - Foliar application to perennial crops
      - Initial registration for almonds and pome fruit



# KINOPROL® 20 SC

Almonds (U.S. Only/import tolerance in Canada)

Target Pathogens – Brown rot/blossom blight (*Monilinia laxa*), Shot hole (*Wilsonomyces carpophilus*), Anthracnose (*Colletotrichum acutatum*), Scab (*Cladosporium carpophilum*), Leaf spot (*Alternaria alternata*)

Proposed use pattern:

- Rate: 4-5 fl. oz. (0.05 – 0.065 lb. ai/A) per application
- 3 applications per year
- 7-day spray interval
- 14-day PHI
- 4-hour REI



- Provides excellent disease control under heavy disease pressure
- No phytotoxicity observed for any treatments

# KINOPROL® 20 SC

## Pome Fruit, Crop Group 11-10

Target pathogens – Scab (*Venturia inaequalis*, *V. pyrina*), Powdery mildew (*Podosphaera leucotricha*, *Phyllactinia mali*)

### Proposed use pattern:

- Rate: 2.25 – 3 fl. oz. (0.03 – 0.04 lb. ai/A) per application
- 3 applications per year
- 7-day spray interval
- 7-day PHI
- 4-hour REI



- Provided excellent disease control (equal or greater than industry standards)
- No phytotoxicity observed for any treatments

# **KINOPROL<sup>®</sup>**

ACTIVE INGREDIENT

- Following the initial U.S. registration, label expansion is planned for use on:
  - Pecan (for Tree Nut Crop Group 14)
    - Target pathogens: Brown rot/blossom blight (*Monilinia laxa*), Shot Hole (*Wilsonomyces carpophilus*), scab (*Cladosporium caryigenum*/*Fusicladium effusum*), canker (*Botryosphaeria* sp.) leaf spot (*Alternaria* sp.)
  - Stone Fruit Crop Group 12-12
    - Target pathogens: Brown rot/blossom blight (*Monilinia fruticola*), powdery mildew (*Podosphaera clandestine*), *Botrytis*
  - Grape
    - Target pathogen: *Botrytis*



Thank you!

