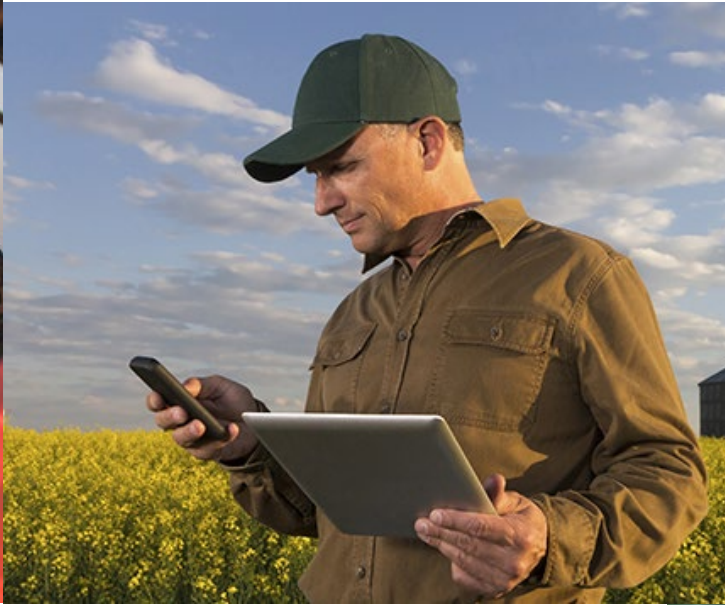


Will



WIFI

Cedric



Cellular (4G/ 5G)

Pam



Paper

Alfred

Offline



Audit on station with reliable WIFI

- FRD will save their entries on the website
- QA on their own device, will review those entries after being saved.



WIFI WILL

Reliable cellular service (no WIFI)

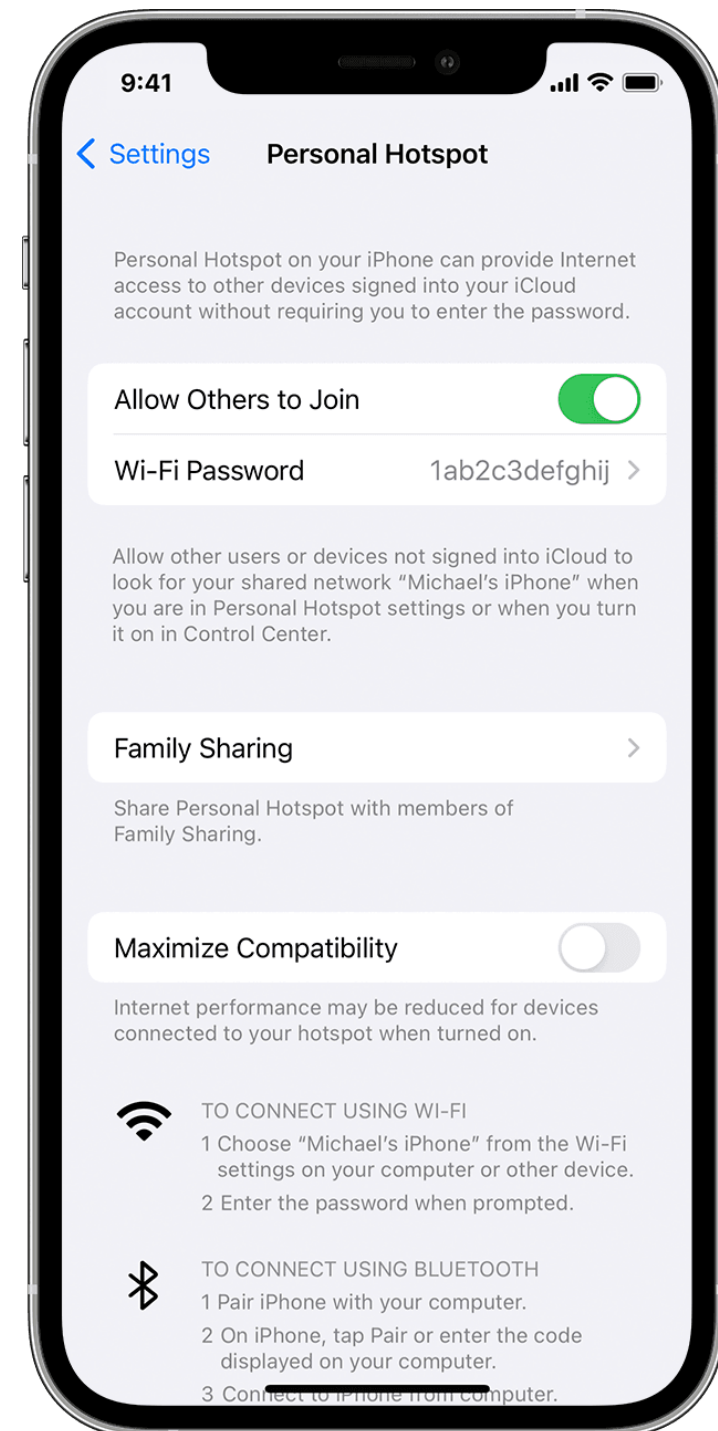
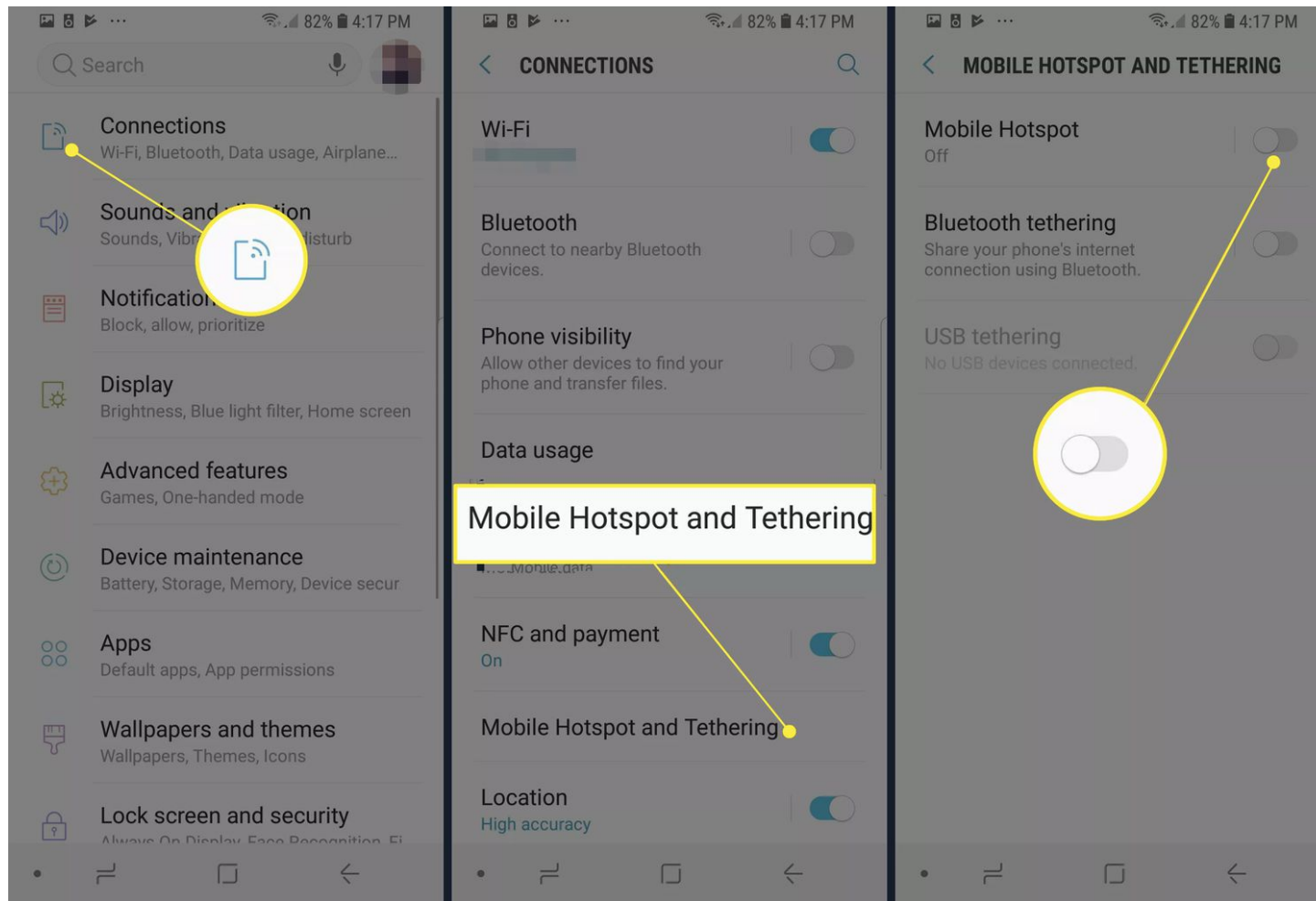
- FRD and QA must have devices with a cellular network plan
- Mobile hotspot option.
- FRD will save their entries on the website.
- QA on their own device, will review those entries after being saved.



Cellular Cedric

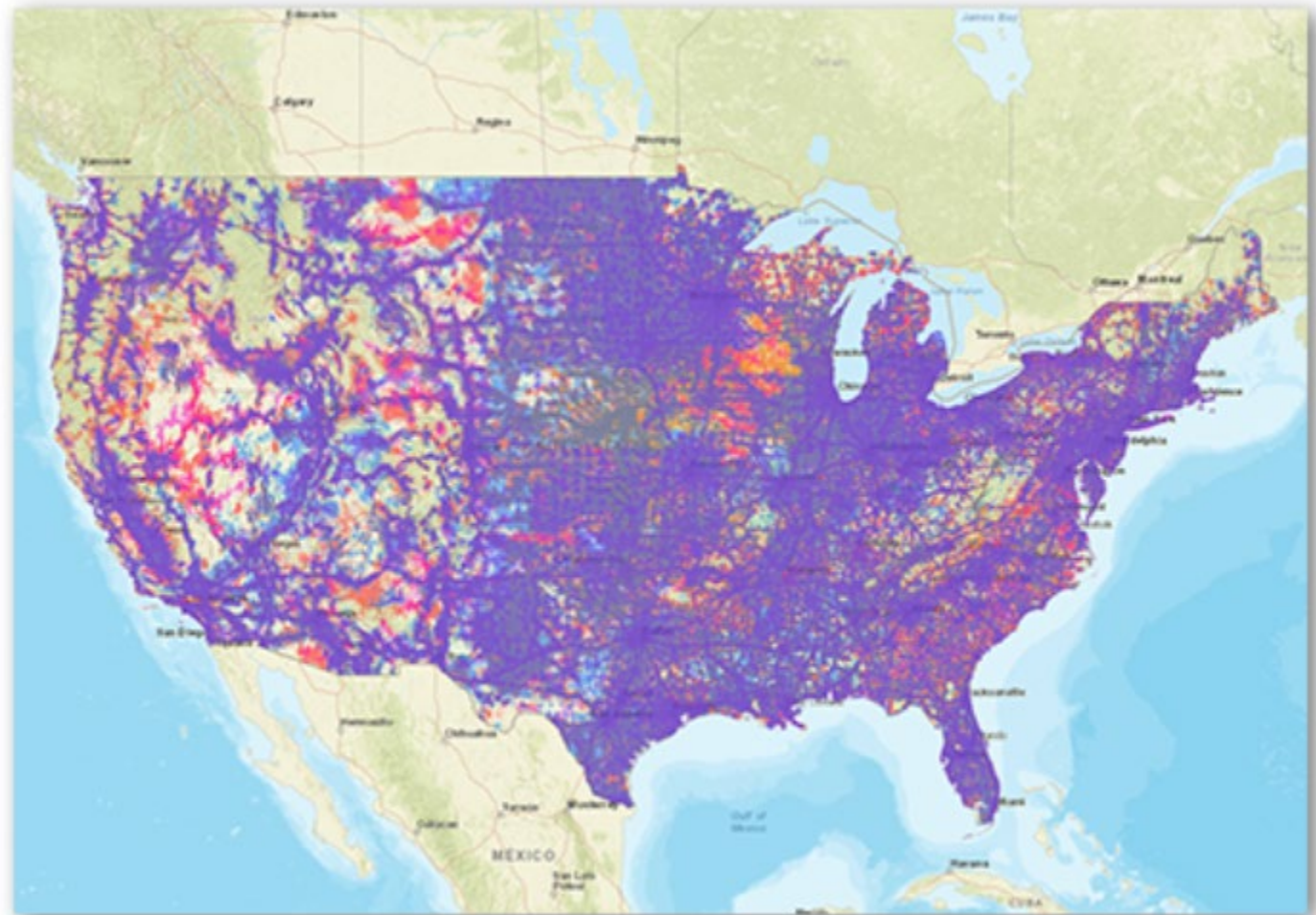
Mobile Hotspot?

Turns your cell phone into a WIFI network for internet access on your laptop.



Hotspot consideration: What cellular network should I join?

- Check your coverage map!
- Google: cellphone network coverage map
- FCC: check where you audit
- <https://www.fcc.gov/BroadbandData/MobileMaps/mobile-map>



[Go to the Mobile Map](https://www.fcc.gov/BroadbandData/MobileMaps/mobile-map)

Cedric enabled the hotspot 😊

- He doesn't pay for a iPad cellular plan.
- Instead, he accesses the eFDB on the internet via his iPad WIFI.
- His cellphone provides the WIFI hotspot.
- QA will also use the hotspot and follow the entries via the website



Cellular Cedric now has WIFI

iPhone vs iPad



iPad (9th generation)



iPad mini (6th generation)

- iPhone display 6.7 to 6.1 inches
- Cell phone displays too small
- iPad display size up to 13 inch
- Both use Apple iOS operating system and WIFI. Both require a cellular plan/ hotspot.
- iPads are recommended but not available for offline use until late 2023.

Macbook Laptop



Not recommended

No “offline” eNotebook

Expensive

Too highly powered
relative to the style of
IR-4 work

macOS Ventura 13.2.1 (latest version)

MacOS X (2015) ok



Windows Tablets

Recommended due to the offline software/ operating system
Range of prices and “toughness” (built in or hard cases)



Designed for
 Microsoft
Surface



- Dell Latitude 7220 Rugged Extreme Table
- Microsoft Surface Pro with Rugged Case

Windows Laptops

- Windows OS 11 (latest version)
- Windows OS 10 (2015) ok
- Many options – need to buy case
- Dell
- HP
- Asus
- Lenovo



- Dell latitude N4951

Chromebooks, Android OS, and other oddities

- Not Recommended
- Not fully functional for applications
- Only Windows and Apple iPad operating systems have a “offline” eNotebook version currently



Checked out eFDB forms, entered Offline

- FRD will enter directly into the offline forms and save
- Hand over their device to QA, when not in use, for QA to review entries in real time
- FRD checks forms back in after event
- QA audits website data and any paper raw data



Offline Alfred

FRD Printed the Forms (Transcribed)

- FRD will enter data into paper printed forms.
- Hand over the paper raw data to QA, when not in use, for QA to review entries in real time
- FRD will transcribe paper data into eFDB forms
- QA will audit the paper raw data and the eFDB data



Paper Pam

Will



Cedric



Pam



With all of these FRDs:

QA will need an appropriate device to access the eFDB data simultaneously and separately from the FRD



Alfred