



EcoSwing[™]
BOTANICAL FUNGICIDE

2018 IR-4 Annual Meeting



Formulation:	Swinglea glutinosa extract; (SL, 82%)
FRAC:	NC – Not Classified yet
Registration:	Federally registered, states pending
Action:	Contact Preventative & Curative
Movement:	SAR
Crop Safety:	Strong across all labeled crops
Residual:	7 - 10 days
Rates:	1.5 to 2 pints/acre or /100 gallon



Chemical Class:
Biological Extract

Powdery Mildew



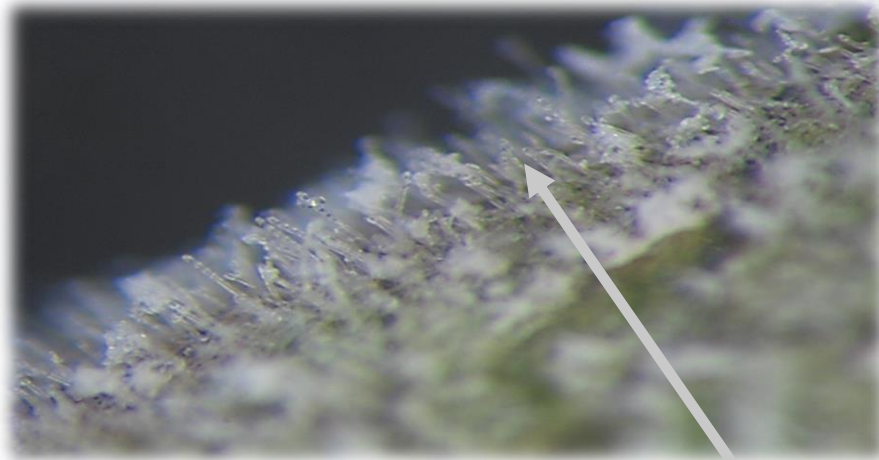
Botrytis



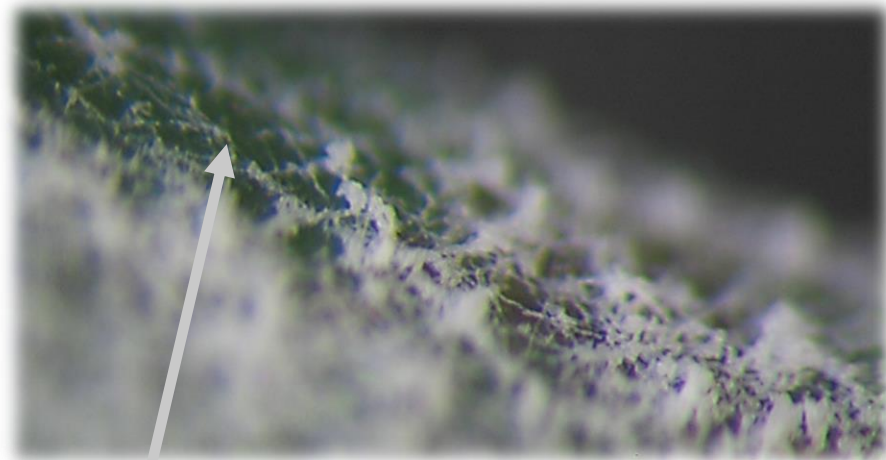
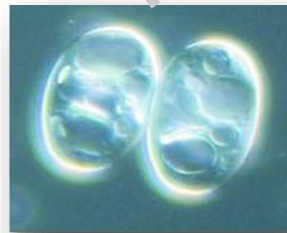
Brown Rot



Ecoswing™ provides **curative activity** of some fungal pathogens by drying cell structures



Viable conidias of
Sphaeroteca pannosa
(powdery mildew)



Desicated conidias of
Sphaeroteca pannosa
(powdery mildew)



Ecoswing™ provides **preventative activity** against non-systemic fungi by activating natural plant defenses

Even in the absence of disease, Ecoswing™ promotes plant production of oxidizing agents (brown rings). These oxidizers, including hydrogen peroxide (H_2O_2), are powerful antiseptics and plant defense mechanisms.



Control (96h)



Wounds **without** Ecoswing™

24 h after treatment



96 h after treatment



Wounds **with** Ecoswing™



EcoSwing™
BOTANICAL FUNGICIDE



Sterile Control

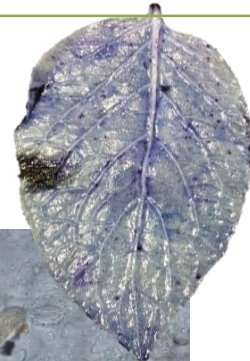
Ecoswing™ primes defense systems, aiding plants in fighting fungal infestation and preventing the spread of infection



Inoculated Control



Sterile + EcoSwing™



Inoculated + EcoSwing™



EcoSwing™
BOTANICAL FUNGICIDE

Heavy residues
left by some
products can
interfere with
photosynthesis
and require
extra washing
for fresh
market
produce.



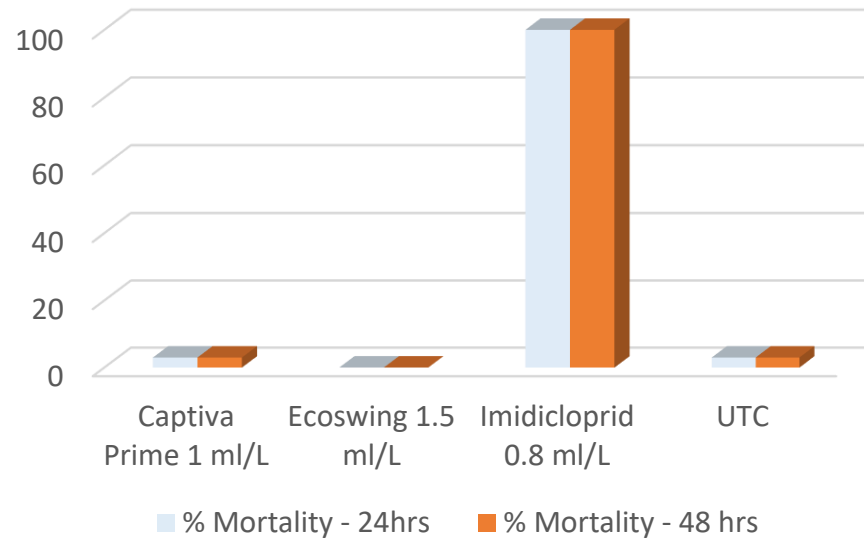
Ecoswing
leaves no
visible residue
and leaves a
noticeably
greener and
healthier
looking foliage



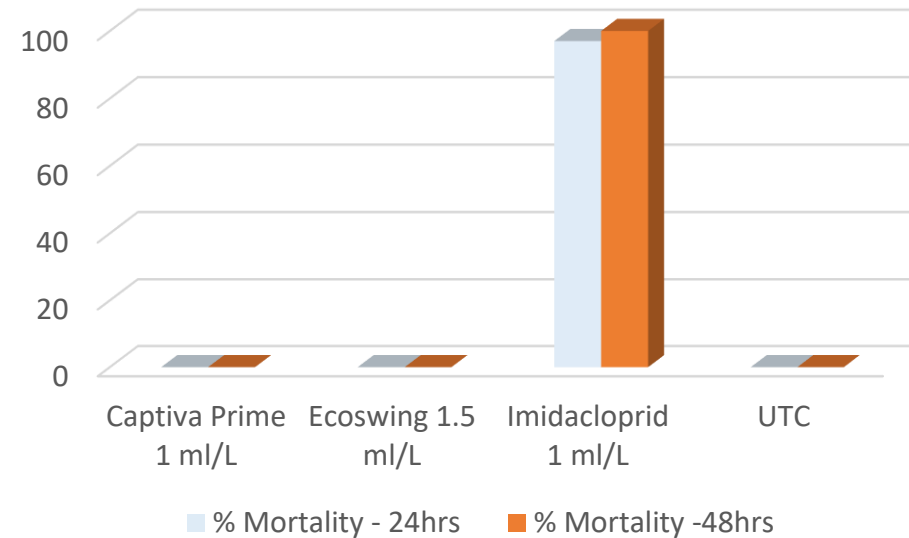
Ecoswing™ is tough on pathogens and easy on beneficials



% Mortality of *Phytoseiulus persimilis*



% Mortality of *Orius spp.*



Application Timing

- Although **Ecoswing**[™] has curative properties it should only be applied in a ***preventative*** manner to assure plant activation prior to pathogen growth.

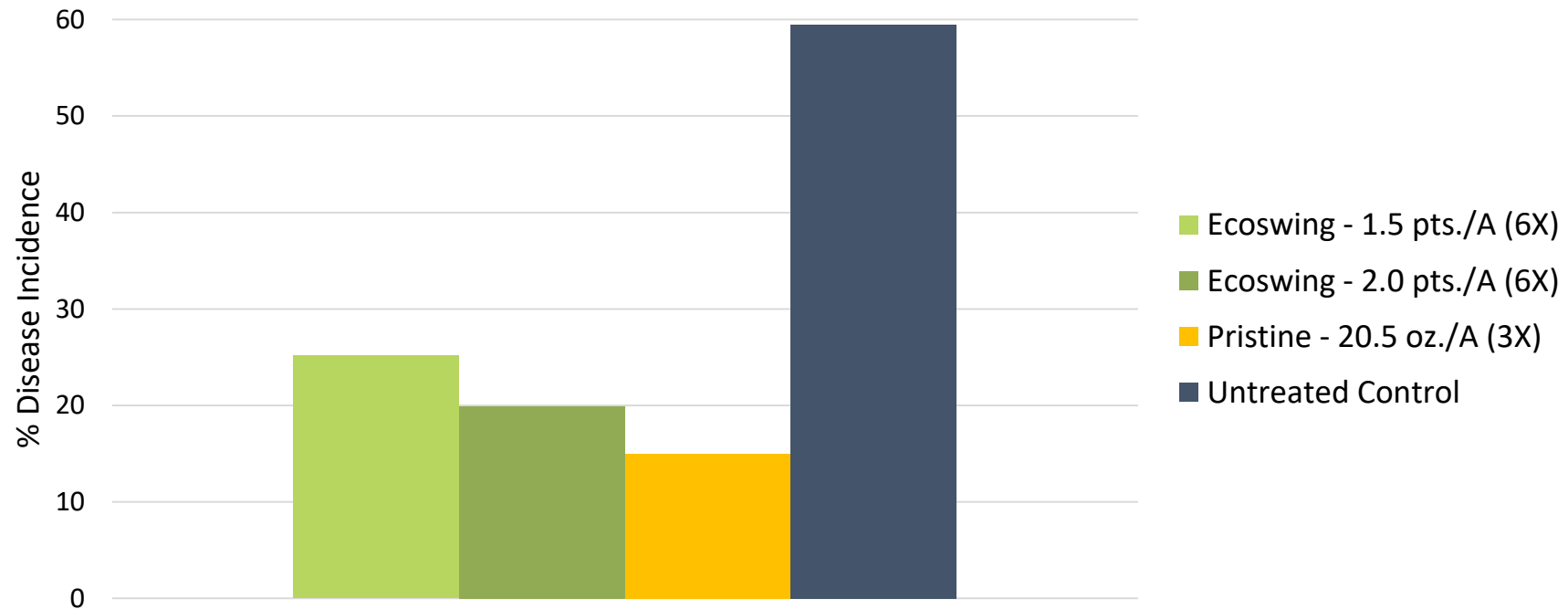
Proper Coverage

- Increase volume to insure adequate coverage
- Nozzle orientation, **Speed**, pressure

Application Intervals

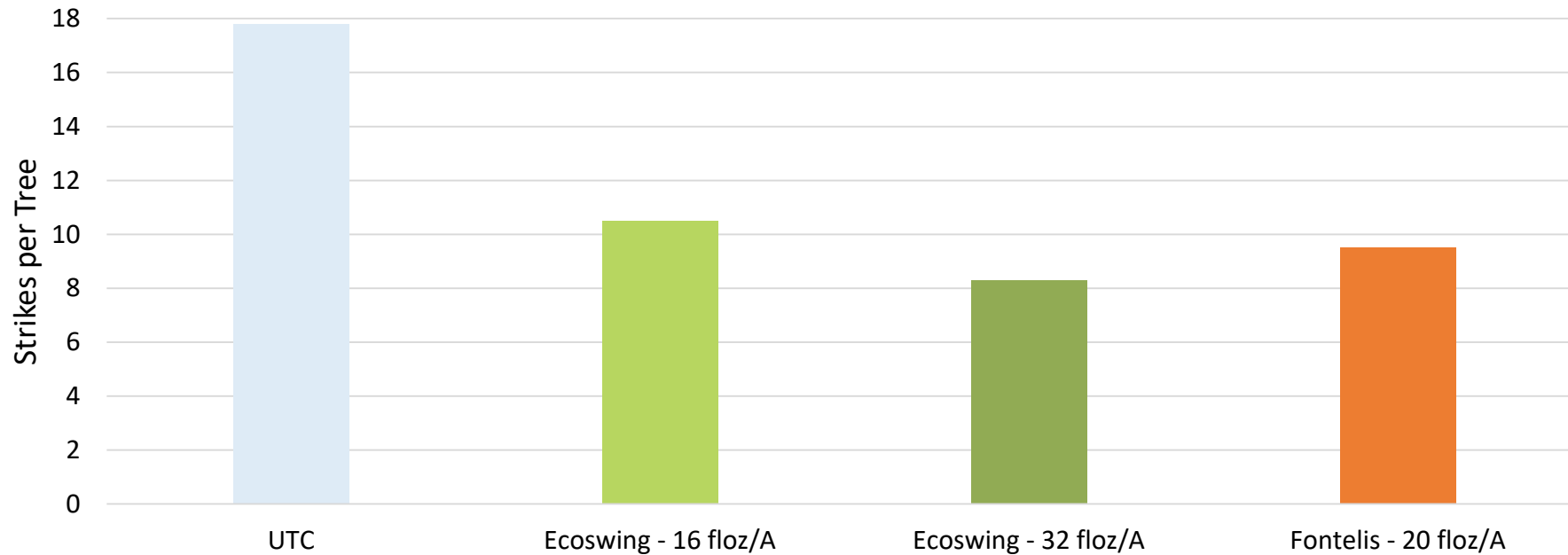
- For best control, and under heavy pressure keep retreatment intervals as short as possible.

Botrytis Bunch Rot (*Botrytis cinerea*) – Riesling Grapes
Potter Valley, CA – 2015



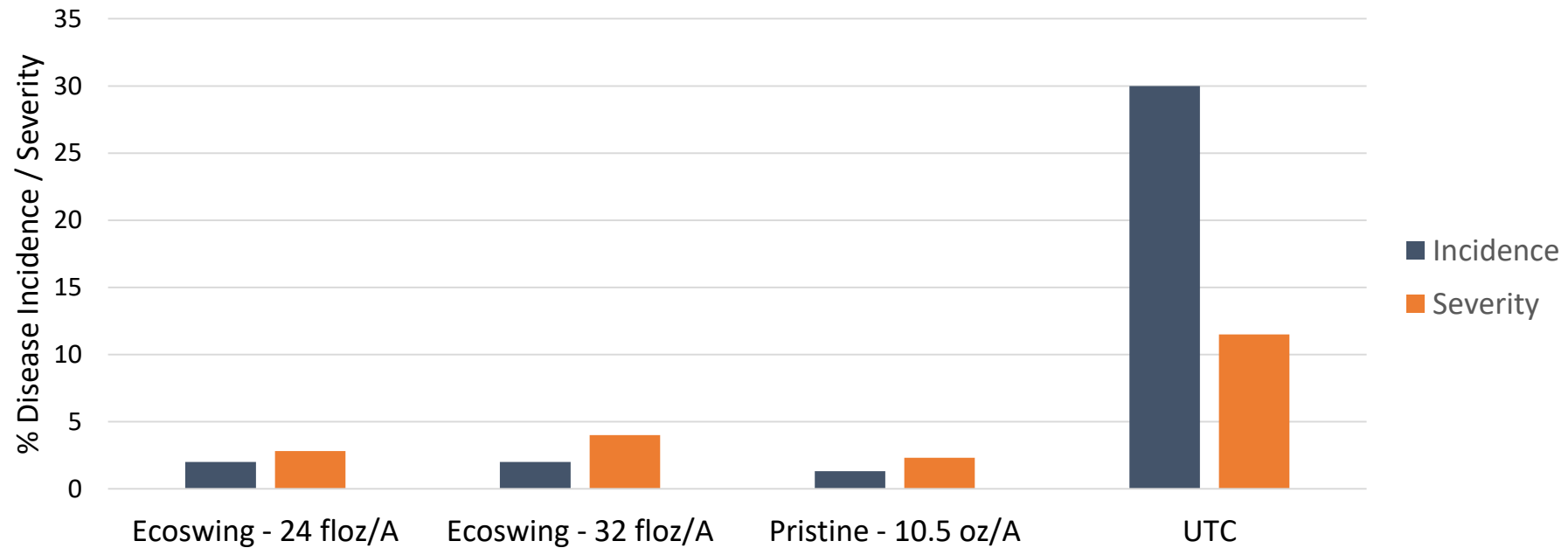
- 6x = 6 applications, 3x = 3 applications
- All treatments included Latron B 1956 @ 4 oz./100 gal.

Brown Rot Blossom Blight – Almonds
Sanger, CA – 2017



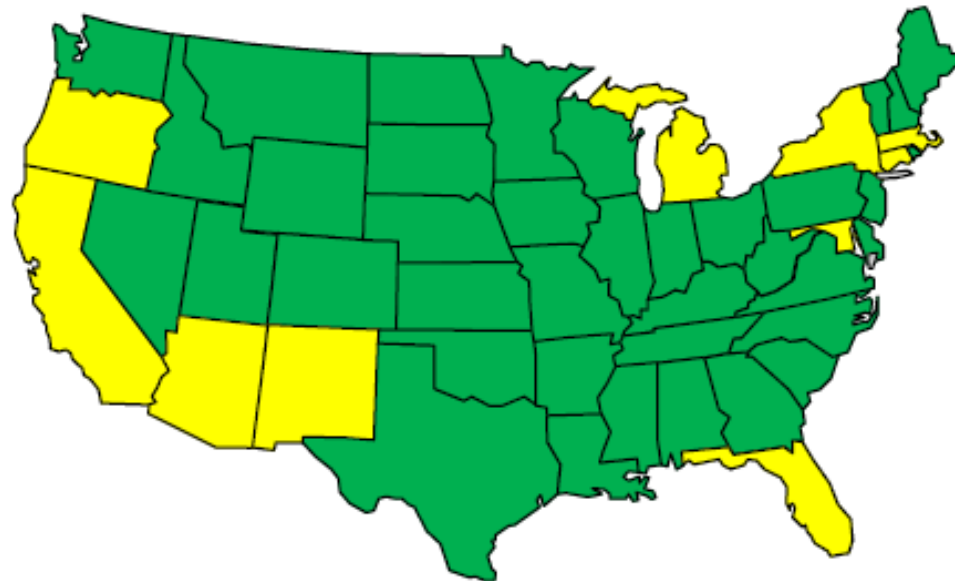
- Rated 4/14/17
- 4 applications on 2/17, 2/25, 3/7, 3/14.
- All treatments included Dyne-Amic @ 6 floz/A
- Applications @ 100 GPA



Almond Rust – Almond
Escalon, CA – 2016



- Rated 6/14/16
- 3 applications on 2/15, 2/22, 3/2
- All treatments included R-11 @ 0.05% v/v
- Applications @ 100 GPA

Registration Status- 9/7/18



-  **Effective Area**
-  **State Registration Pending**



Thank you

Questions

Kartik Anand - kanand@gowanco.com

Eric McEwen - emcewen@gowanco.com