

Innovation with Integrity™



ISK product introductions

Christopher Gee, Ph.D.

Director of Product Development

ISK Biosciences

Concord, Ohio

Innovation with Integrity™

CYCLANILIPROLE MINOR USE PROJECTS

PR# 11894	Lepidoptera, thrips on GH tomato
PCR# 12515	Lepidoptera on GH lettuce
PR# 11952	Artichoke Plume Moth on artichoke
PR# 12264	Head Moth/nymphal plant bugs on sunflower
PR# 11570	Lygus on safflower

FLONICAMID MINOR USE PROJECTS

PR# 11705	Aphids on GH lettuce
PR# 11383	Lygus on sunflower
PR# 11966	Sucking insects on prickly pear
PR# 12283	Aphids and whiteflies on pomegranate
PR#11969	Aphids on highbush blueberry
PR# 11970	Aphids on sweet corn

PYRIOFENONE MINOR USE PROJECTS

PR# 11446	PM on GH cucumber
-----------	-------------------

ISOFETAMID MINOR USE PROJECTS

PR# 12000	Cylindrocarpon on ginseng
-----------	---------------------------

FLUAZINAM MINOR USE PROJECTS

PR# 12480	Anthraco nose on papaya
-----------	-------------------------

Prolivo 300SC

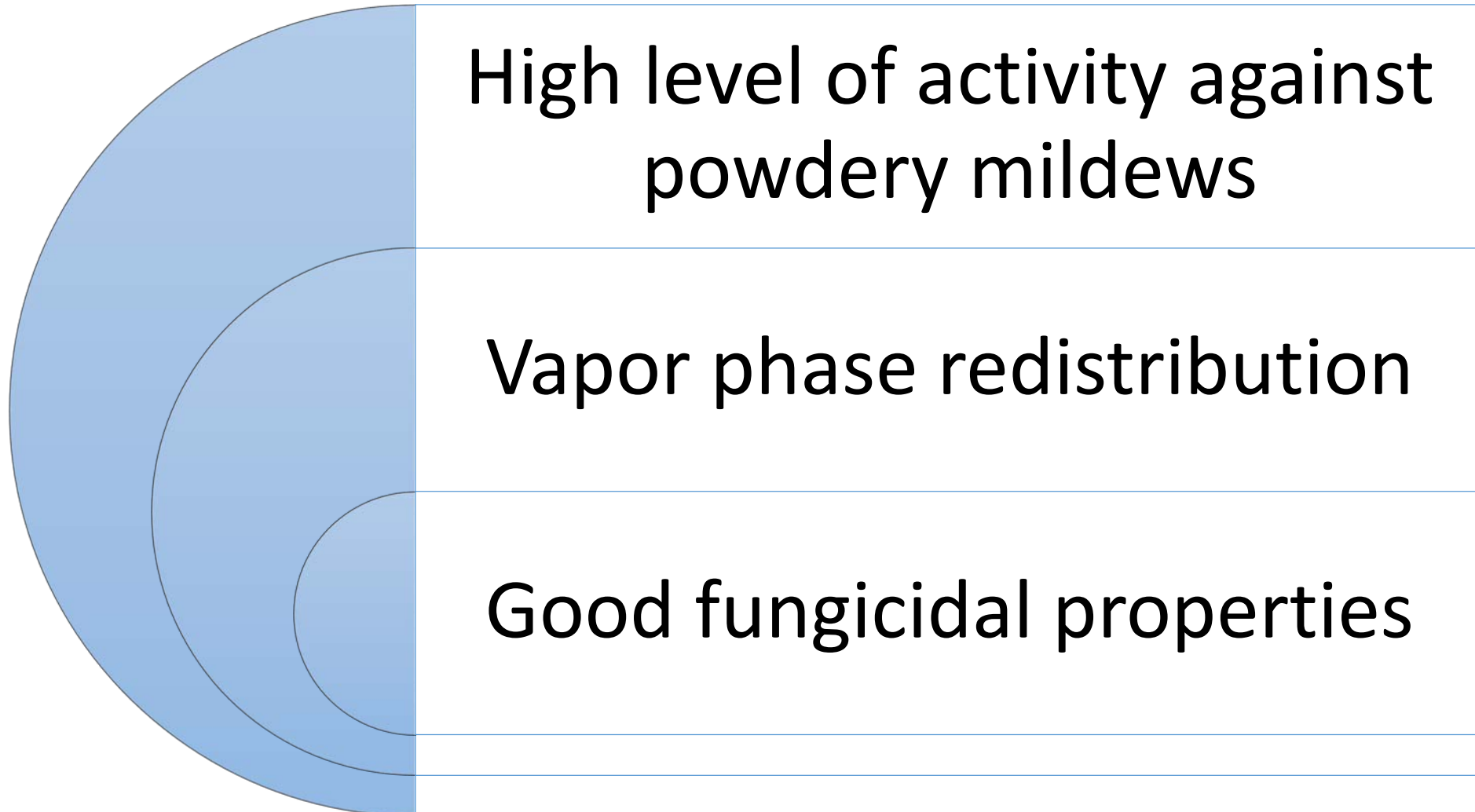
Pyrioferone

Innovation with Integrity™

ISO name:	pyriofenone
Trademarks:	Prolivo, Property, Kusabi
MoA:	Likely actin disrupter
FRAC Group:	50 (FRAC medium risk for resistance)
Activity:	Preventive, locally systemic, moves in vapor phase
Registrations:	USA, Canada, Mexico, EU, Japan, Australia

ISO name: **Pyriofenone**

Crops registered: **Cucurbit vegetables, berry and small fruit (except 13-07C), fruiting vegetable (submitted)**



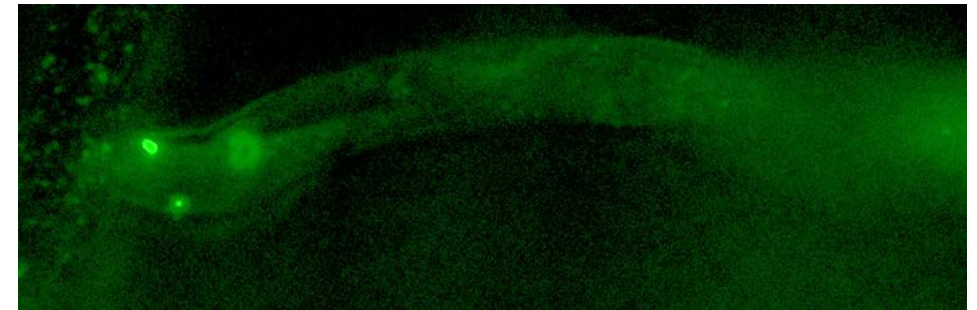
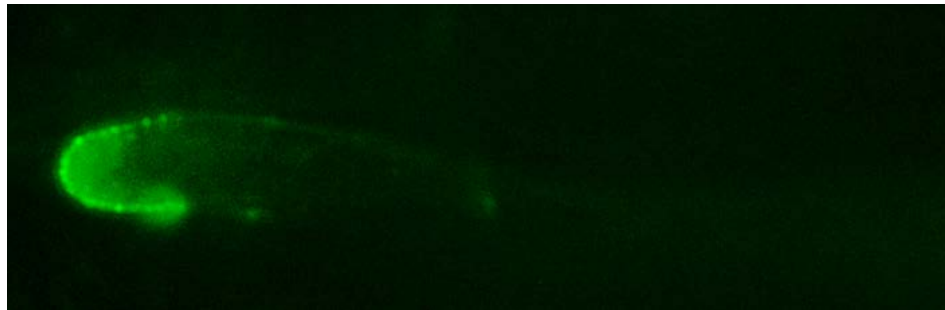
Cytological changes of *B. graminis*

Actin disruption
(FRAC code: 50)

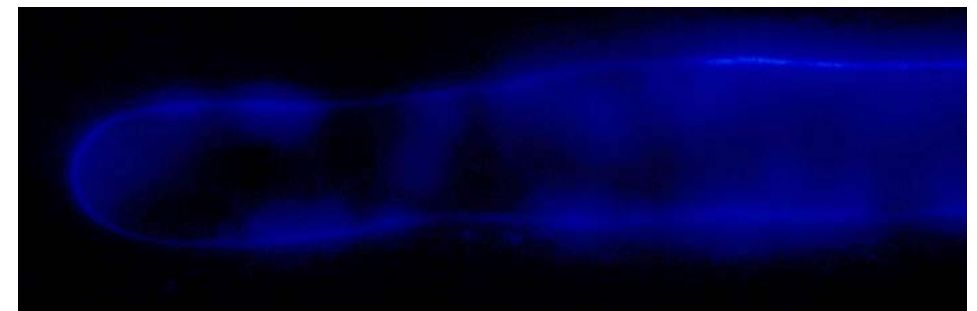
Control

Property 300SC

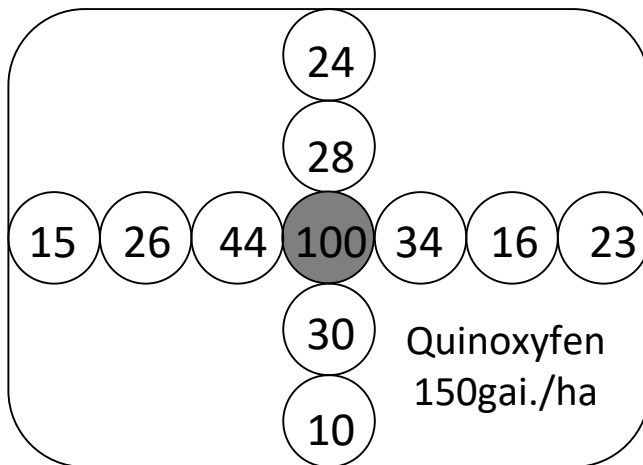
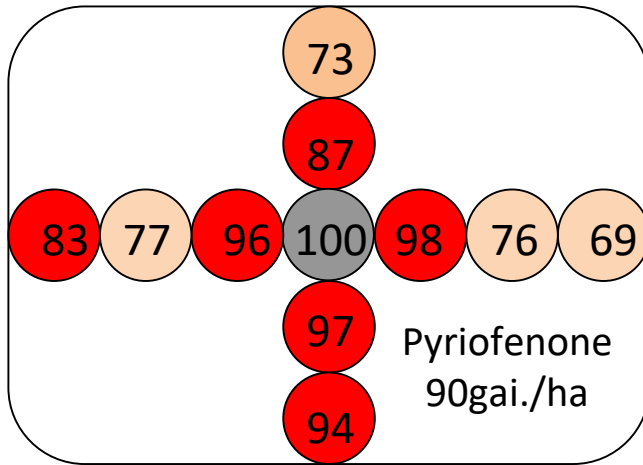
Actin



Glucan
(Cell wall)

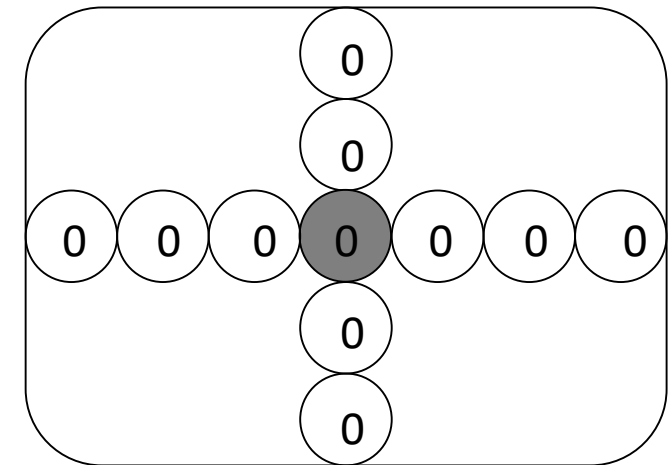


Vapor activity on plant



Entries : Control Value (CV)

- : CV. more than 90%
- : CV. more than 50%
- : CV. less than 50%



Control



Property 90 g ai/ha + Cohere 4 fl oz/100 gal



Harvanta 400SC

Cyclaniliprole

Innovation with Integrity™

CYCLANILIPROLE

Mode of Action: Ryanodine receptor modulator

IRAC Group 28

- Anthranilic diamide
- **Not Systemic**

Spectrum of activity: broad

- Highly effective against Lepidopteran, Dipteran, and Coleopteran pests at low use rate
- Long residual activity

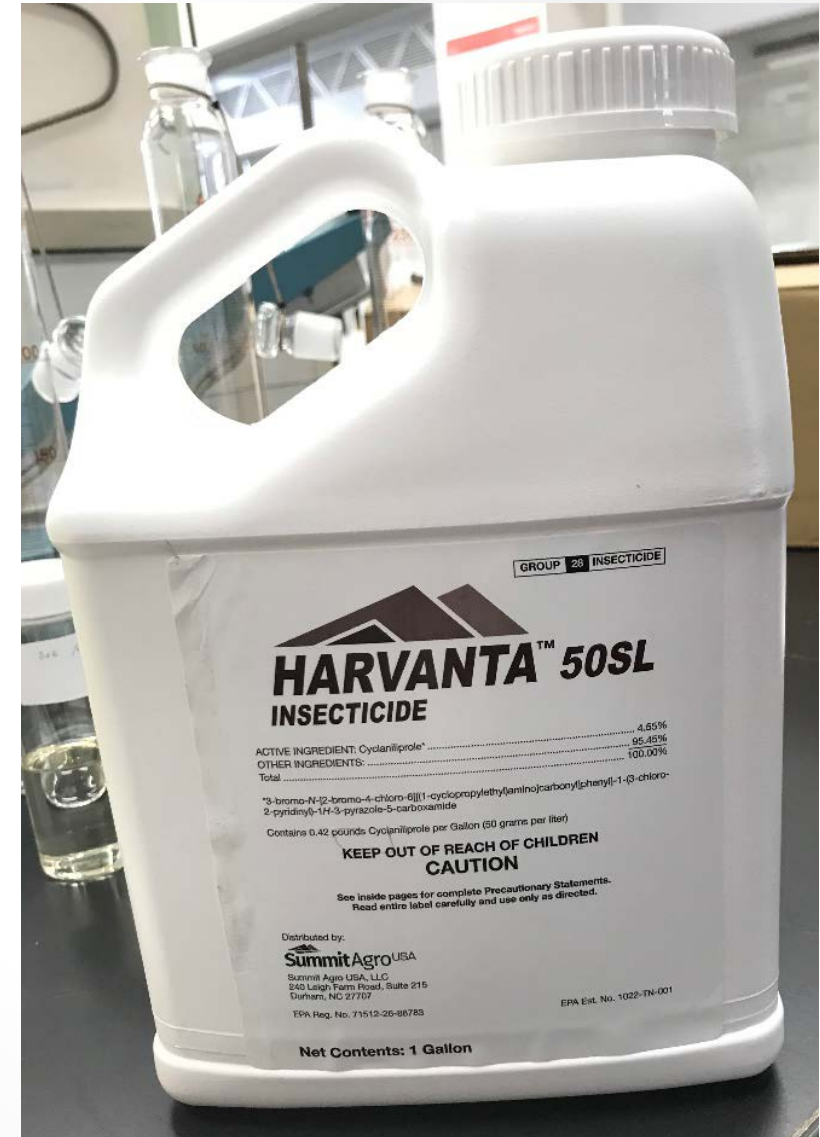
Minimal impacts on beneficial arthropods

- Reduced risk

New option for pest management programs

- Excellent fit with IPM/IRM programs

GROUP 28 INSECTICIDE



CYCLANILIPROLE

Has been or will be labeled for key pests of:

- Pome Fruits
 - Stone Fruits
 - Tree Nuts
 - Grapes
 - Berry and Small Fruits
- Verdepryn 100SL

- Fruiting Vegetables
 - Brassica Leafy Vegetables
 - Leafy Vegetables
 - Cucurbits
 - Root and Tuber Vegetables
- Harvants 50SL

- Turf
- Ornamentals

Mission Herbicide

Flazasulfuron

Innovation with Integrity™

- **Development Code:** SL-160
- **CAS Number:** 104040-78-0
- **Developer Company:** Ishihara Sangyo Kaisha, Ltd.
- **Mode of Action:** ALS/AHAS Inhibitor - WSSA Group 2 (HRAC Class B)
 - Inhibition of acetolactate/acetoxyacid synthesis (amino acid synthesis inhibitor).
- **Formulation:** SL-160 25 WG (250 gram ai per kilogram of formulated product).

- General Use Information:
 - ***Postemergence Activity:*** selective activity on both broadleaf and grass weeds.
 - Apply to weeds 2 to 4 inches tall – no taller than 4 inches and/or prior to first tillering for grasses.
 - ***Preemergence Activity:*** selective activity on both broadleaf and grass weeds.
 - Rainfall or irrigation, within 2 weeks after application, is needed for activation of preemergence activity.

Crop Uses:

- **Citrus** (*Navel & Valencia Orange, Lemon, Mandarin, and Tangerine*).
- **Conifers and² Forestry** (*Container and Field Grown; Ornamentals, Christmas, Conifer Release, and Forestry*).
- **Grape** (*Wine, Table, and Raisin*).
- **IVM & Nonagricultural Areas**
- **Tree Nut** (*Almond, Hazelnut, Pecan, Pistachio, and Walnut – Black and English*).
- **Turf** (*Established stands of bermudagrass, buffalograss, centipedegrass, seashore paspalum, and zoysiagrass*).
 - *Warm-season grasses such as argentina bahiagrass, carpetgrass, and St. Augustinegrass are not tolerant.*
 - *Cool-season grasses such as bentgrass, fescue, Kentucky bluegrass, and ryegrass are not tolerant.*